

W I N G A R U

TO THINK



SAINT IGNATIUS' COLLEGE RIVERVIEW
CAPITAL CAMPAIGN FOR OUR
SCIENCE AND TECHNOLOGY BUILDING



“Wingarū will facilitate collaboration between the sciences, mathematics, technologies, and health and personal development, enhancing learning for generations.

With interdisciplinary opportunities and connections to our First Nations heritage and Jesuit scientific pursuit, it will send our young people into a changing world with the skills to make it better.”

Russell Newman
Deputy Principal Teaching and Learning

Saint Ignatius' College Riverview acknowledges the Cammeraiḡal people who are the Traditional Custodians of this land upon which we are privileged to live and educate. We pay our respects to the Elders past and present and extend that respect to all First Nations people who dwell on this land.

First Nations people are respectfully advised that this publication may contain the words, names and images of people who have passed away.

Embracing connection to past, present and future



Dear community,

Saint Ignatius' College Riverview was established thanks to the generous invitation of Archbishop Vaughan; the founding vision of Father Joseph Dalton SJ, the College's first Rector; and Father John Therry's significant bequest of the greater part of his estate to the Society of Jesus. This spirit of generosity and commitment to our students continues today with Wingarū.

Wingarū, our new science and technology building, meaning “to think” in the Cammeraiḡal tongue of the local First Nations people, will be one of the College's most significant building endeavours since the iconic sandstone Arrupe building.

Wingarū's contemporary learning spaces will meet the needs of today's world providing specialised teaching and learning places for studying Science, Technology, Engineering, Mathematics and Personal Development Health and Physical Education (PDHPE).

As well as being home to six House groups, these new spaces will provide an environment that supports students' mental health and wellbeing.

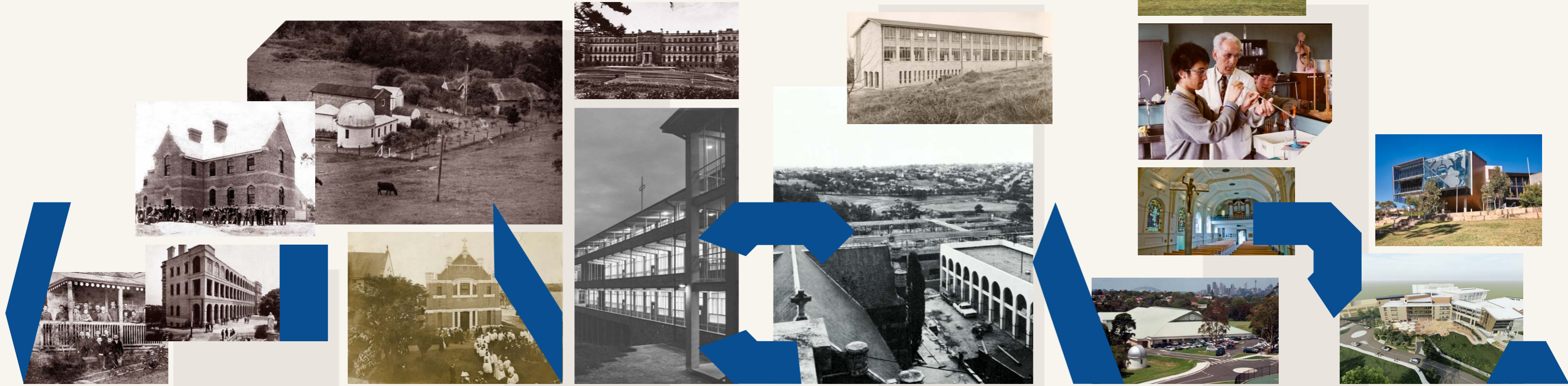
The construction program has been planned to ensure continuity in the delivery of the College's exceptional teaching and learning.

With the support of our community, Saint Ignatius' College Riverview is evolving to meet the needs of the modern day learner.

We thank our generous donors for their continued belief in the College's mission and invite you to learn more about Wingarū and contribute to the next chapter.

Dr Paul Hine
Principal

An evolving Riverview



1880

1878 28 June
Father Joseph Dalton SJ purchases Riverview Estate, following a significant bequest from Father John Therry.

1880 12 February
The College opens its doors, with just one cottage serving as classroom, dormitory, chapel and refectory.

1880 September
St Michael's House is completed in the College's foundation year.

1885-1889
The first major building project is completed when the western end of the Main Building (Arrupe) opens.

1908
Father Edward Pigot SJ establishes the Riverview Observatory. At the time, it is the only fully equipped seismological observatory in Australia.

1909 23 May
Dalton Memorial Chapel Opening ceremony held. A startling art nouveau creation and still an outstanding example of the style, the Chapel is the Old Ignatians' official monument to College founder, Fr Joseph Dalton SJ.

1929-1930
The Main Building (Arrupe) is completed in time for the 50th Anniversary of the College – Eastern and Doyle Wings added and the Dalton Memorial Chapel is expanded.

1958-1959
Wallace Wing classrooms, study hall and science block completed.

1964 February
The Junior School (the Regis Campus) opens.

1969-1973
The largest building program ever undertaken since 1885 at the College takes place, including the Vaughan Wing, the Therry Wing, and Saint John's Boarding House.

1985-1995
The Gartlan Centre, The Woods music centre, Ramsay Hall, and O'Kelly Theatre are completed.

2000 20 August
Kevin Fagan House for senior boarding students opens.

2003
O'Neil Wing and Therry Campus open.

2008 2 November
Official opening of the renewed Dalton Memorial Chapel and Christopher Brennan Library.

2018
Therry Building opens, "*invoking the best in modern educational practice, particularly diverse teaching and learning methodologies.*" Dr Paul Hine, Principal, quoted in *Our Alma Mater* 2018.

2025
Wingarū building opening.

2025

A future embedded in a history of scientific questioning

An understanding of science is essential to daily life, helping us appreciate the intricacies of an evolving world. The Society of Jesus has a long history of engaging with the intersection of faith and reason, developing a reputation for excellence in these areas. Key Jesuits in history have encouraged us to think, question, and act – and have been pioneers and leaders in areas of science and technology.

In all areas of learning, we encourage students to engage in critical thinking across disciplines and this comes to the fore, especially in the area of science and mathematics. Wingaru, our dedicated science and technology building, will allow us to continue this great Jesuit tradition, aligning with the College's commitment to human excellence. This new learning environment is the College's response to the challenge of Fr Arturo Sosa SJ, the Superior General of the Society of Jesus, for our "institutions to be spaces for educational investigation, true laboratories in teaching, from which we can draw new teaching methods or models."



“ Since the earliest days of the Society of Jesus, Jesuits sought to embrace the humanistic approach to education ...

... affirming the good where it could be found and drawing inspiration from the insights of Christian humanism and contemporary scientific thinking at the time.”

Fr Tom Renshaw SJ
(OR1990) Rector



Respecting Cammeraigal Country

The College and its surrounding areas hold significant cultural importance as a sacred site for the Cammeraigal clan of the Gai-mariagal Nation. As a school, we feel a strong connection to this Country and are committed to actively reconciling with our First Nations people. Our new science and technology building provides an opportunity to accelerate learning while honouring this connection.

Elders and First Nations students have been instrumental in the discernment process to name this building Wingaru – “to think.” The name reflects our deep connection to Indigenous traditions, Jesuit values, and education. Wingaru allows us to live out our values within a new space, inspired by connection to Country.

“ First Nations symbolism is inherent in this building. Local Elders and First Nations students have been instrumental in the discernment process to name this building Wingaru — “to think.”

We are driven by this spirit to look after each other and move forward with strength and passion, honouring each other. This is our opportunity to celebrate our First Nations and Jesuit traditions, and in doing so create learning environments for the future.”

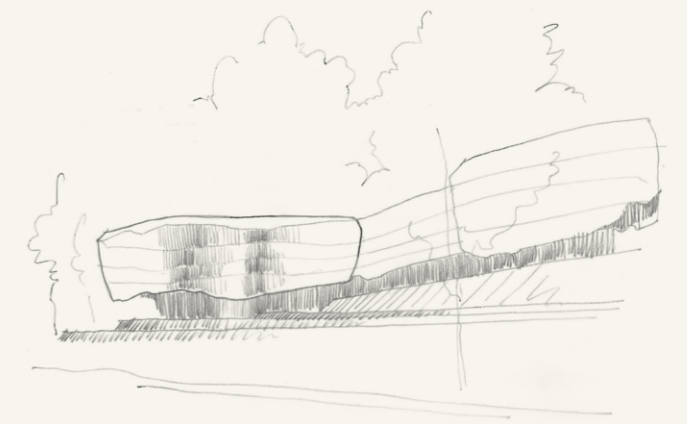
Kaleb Taylor
First Nations Co-ordinator

Protecting ancient First Nations culture and knowledge-sharing is imbued in the design

Connection to Country and natural rock shelters along the Lane Cove River inspired the Wingaru building design and landscaping.

Learning spaces are grouped around a gathering space

A central ‘pod’ hovers in the atrium, enabling students to learn, socialise and reflect.



Supporting and fostering our students' pastoral care



The College fosters each student's growth and formation, instilling self-worth and enabling meaningful contributions to the community. *Cura Personalis*, a key Jesuit value, underpins this approach; this means caring for our students' intellectual, emotional, moral, and spiritual development.

Wingarū is designed to enhance our strong culture of pastoral care, providing six additional House spaces and strengthening the connection between learning and wellbeing. Co-locating House spaces alongside staff rooms will enable easier access to students for guidance, counselling and mentoring.

“ **What I loved most about my time at Riverview was being around that close-knit community, who support and care for each other, helping us to be our best and taking this out to the world beyond Riverview.**”

Taine Woodford (OR2020)
First Nations Bursary recipient



Students will enjoy a contemporary canteen and outdoor area designed to promote healthy choices and wellbeing.

These spaces aim to create a sense of connection and a place for students to gather during breaks from learning.



Introducing the Wingaru building – innovative learning spaces now and into the future

The new Wingaru science and technology building represents our commitment to contemporary learning practices, respect for cultural heritage and drive for future progress. Wingaru will provide our students with a place to grow, reason and reflect logically and critically. The College remains committed to inspiring and educating the next generation of thinkers to create a better world. Our graduates will be well-equipped with the necessary skills and grounded in the Jesuit values of discernment – to think, question, and act.



View of North East Façade



View of North East & East Façades

“Bringing this vision to life will create a place of collaboration, learning and wellbeing that is inherently connected to Country and respects the environment.”

The building itself is a teacher, offering spaces to gather, share knowledge, and for storytelling.”

Vicki van Dijk
Architect PMDL

Complementary landscaping is planned for the courtyard, specifically selected for the College’s unique setting.



Flexible and adaptive outdoor spaces.



The architecture recalls the terrain of Cammeragal Country.

“I have been extremely blessed at Riverview to have been able to pursue my interests in science, including Physics, Mathematics and Quantum Computing. Given this, I am heartened by the potential of Wingaru to provide the dedicated space and resources for many other students to pursue their passions and extend themselves in the sciences.”

Charles Henry (OR2022)





“ Our gift in support of the Wingaru project is a tribute to my mum, the late Maureen Veronica Smith. Maureen was a devout Catholic, a strong believer in the Jesuits and she worked tirelessly as a nurse so that my brother and I could attend Riverview.

Our sons went on to attend the College. As we are now in a position to give back, we are taking this opportunity to donate so future generations can benefit from this new building.”

Martin Smith (OR1988) and Sharon Smith
Parents and Wingaru Donors



Wingaru*

- 🏠 Five-storey building with contemporary, adaptable teaching and learning spaces.
- 🔬 Dedicated faculty spaces for the teaching and learning of Science, Technology and Applied Studies, Engineering, Mathematics and PDHPE.
- 👁️ Shared general learning spaces for inter-disciplinary and Project Based Learning.
- 🏠 Six dedicated House areas – providing greater equity among Houses.
- 👥 Co-located staff rooms – fostering accessibility and approachability with educators, supporting professional connections.
- 🏠 Health and movement science laboratory.
- 🏠 Covered Outdoor Learning Area.
- 🍽️ Ground floor canteen with expanded food and beverage options.
- 📎 Creation of an educational precinct, connecting Wingaru to the O’Neil Wing.
- 🌿 New landscaped areas reflecting the site’s heritage with spaces for outdoor learning, recreation and storytelling.
- 🔄 Flexible indoor and outdoor spaces for teaching, learning, recreation and community engagement, ensuring improved wellbeing.
- 🌬️ Well-ventilated, sustainable design ensuring students’ wellbeing and environmental efficiency.

*Teaching and learning space allocations are indicative

“

Having both of our sons at Riverview, we see the benefits today from the investments made by those who came before us.

We are pleased to be able to donate and contribute to the community in the knowledge that future generations of Riverview families will benefit from this incredible building.”

Nigel and Catherine Allfrey
Parents and Wingaru Donors



Together,
we can make
a difference

Giving back is ingrained in our College's Jesuit tradition; past, present, and future. Philanthropy towards this significant building endeavour is acknowledged as an act of service, conscience, and compassion, in keeping with Ignis, the College's spirit of giving. We need your support and invite you to partner with us to form the next generation of graduates, enabling them to make a difference in our world.

For those with the capacity to support the development of Wingaru, gifts can be pledged over five years and are tax-deductible. Specific naming opportunities are available for gifts over \$100,000 in recognition of your valued philanthropic support.

We warmly invite you for a confidential discussion about ways to support the development of Wingaru, including donor recognition opportunities.

“ We are all beneficiaries of the vision, sacrifice and generosity of people who have come before us that have built Riverview.

Today our son is the beneficiary of these past actions. We all have something to contribute, no matter how large or small. We are proud to put this into action by supporting the development of Wingaru, which will benefit current and future Riverview boys and families.”

Anthony and Savannah Karam
Parents and Wingaru Donors



WINGARU GIFT

Thank you
for choosing
to support
Wingaru

You can make a gift online or by cheque. All gifts are fully tax-deductible through the Riverview Building Fund.

If you wish to discuss our building campaign and how you can take part, please contact the Foundation on +61 2 9882 8380.

DONATE ONLINE

wingaru.riverview.nsw.edu.au

WINGARU TO THINK

To make a gift by cheque, please return the completed form with your cheque, made payable to Riverview College Foundation.

MY GIFT

I/We would like to support the College's Wingaru capital campaign

By donating:

\$1,000 \$5,000 \$10,000 \$25,000
 \$50,000 Other \$ _____

I would like to make a one-off donation for the amount specified above. I would like to make a recurring donation for the amount specified above:
 annually, for 3 years
 annually, for 5 years

MY DETAILS

Name _____

Address _____

Contact number _____

Email _____

Relationship with the College:

Old Boy Year of Leaving _____
 Current Parent Past Parent
 Other _____

It is College policy not to publish donation amounts. You may also wish for your name to remain anonymous.

I prefer that my name not be published.

I would like to be contacted personally to discuss including the College as a beneficiary in my will.



WINGARU TO THINK

Return your completed form and cheque to:

Riverview College Foundation
Saint Ignatius' College Riverview
Tambourine Bay Road
Lane Cove NSW Australia 2066

Thank you for your gift.

For more information or a confidential discussion, please contact **Claire Lusher**, Assistant Head of Foundation on:

P +61 2 9882 8380
E clusher@riverview.nsw.edu.au
W giving.riverview.nsw.edu.au

The paper in this booklet is sourced from a sustainably harvested forest and is independently certified. Saint Ignatius' College Riverview acknowledges that the College is situated on Cammeragal land and we pay our respects to all First Nations people past, present and future.